

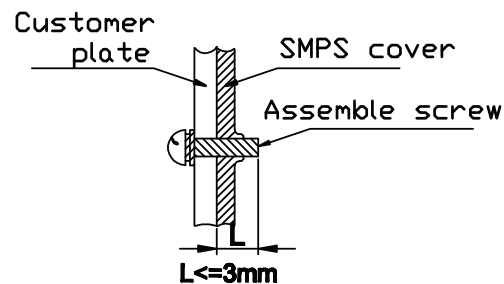
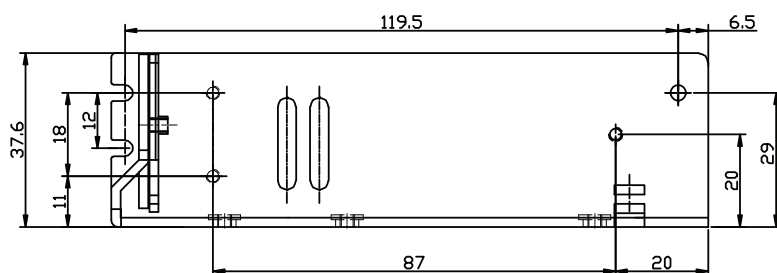
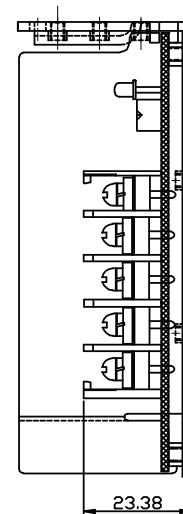
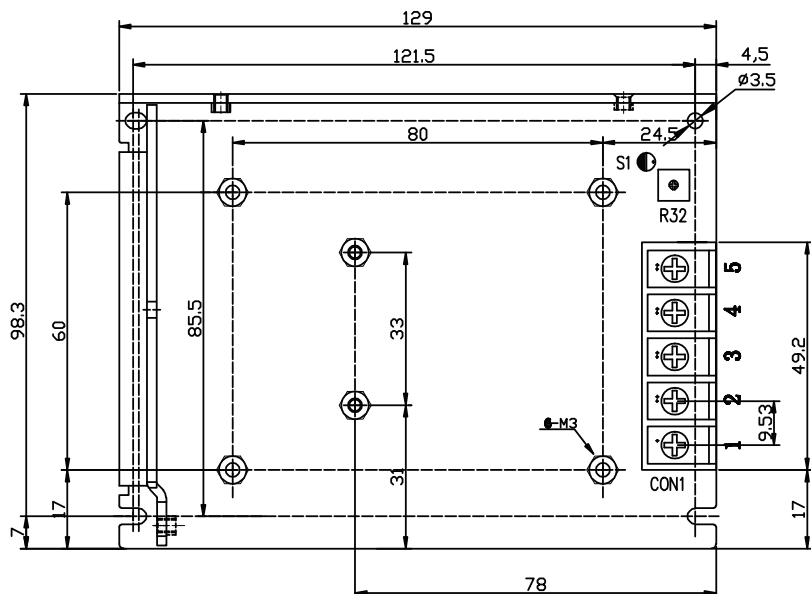
**Features:**

- Universal AC input/ Full range
- Built-in active PFC function, PF>0.93
- Miniature Size, High Efficiency, and High Reliability
- Output Protections: OLP/OPP/SCP
- Withstand 300VAC Surge Input for 5 Sec
- Suitable for critical applications
- Wide operating ambient temperature (-20°C~60°C)
- PCB soldering side with conformal coating
- All using 105°C long life electrolytic capacitors.
- 100% full load burn-in test



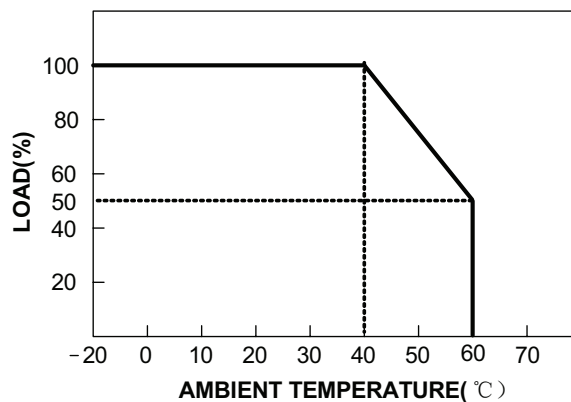
Model		QGKF-100-5	QGKF-100-12	QGKF-100-24	QGKF-100-48
Output Characteristics					
DC Output		5V	12V	24V	48V
Rated Current		20A	8.5A	4.2A	2.2A
Current Range (Note 1)		0~20A	0~8.5A	0~4.2A	0~2.2A
Ripple and Noise (Note 2)	0~60°C	≤150mV	≤150mV	≤150mV	≤150mV
	-20~0°C	≤150mV	≤150mV	≤150mV	≤200mV
Voltage ADJ. Range		3.3V~5.5V	10V~15V	21V~27V	43.2V~52.8V
Voltage Accuracy		±2.0%	±2.0%	±1.0%	±1.0%
Line Regulation		±0.5%	±0.5%	±0.5%	±0.5%
Load Regulation		±2.0%	±2.0%	±1.0%	±1.0%
Set-up Time		≤4.0s (115VAC input, full load) ≤2.0s (230VAC input, full load)			
Hold-up Time		≥12ms (230VAC input, full load)			
Temperature Coefficient		±0.03%/°C			
Overshoot and Undershoot		<5.0%			
Input Characteristics					
Voltage Range		90VAC~264VAC			
Frequency Range		47Hz-63Hz			
Power Factor (Typical)		PF>0.98/115VAC PF>0.93/230VAC			
Efficiency (Typical) 230VAC Input		84%	87%	88%	88%
AC Current (max)		<1.5A			
Inrush Current (Typical)		<30A@115VAC Cold start <50A@230VAC Cold start			
Leakage Current		Input-Output: <0.25mA Input-PG: <3.5mA			
Protection					
Over Load (OLP)		110%~150% of rated output current, hiccup mode, auto recovery			
Over Power (OPP)		110%~150% of rated output power, hiccup mode, auto recovery			
Short Circuit (SCP)		Long-term mode, auto recovery			
Environmental Characteristics					
Operating Amb. Temp. & Hum		-20°C~60°C; 20%~90% RH Non-Condensing			
Storage Temp. & Hum		-30°C~85°C: 10%-95% RH Non-Condensing			
Safety Standards		UL60950-1 2nd Ed; IEC 60950-1:2005(2nd Ed); EN60950-1: 2006			
Withstand Voltage		Primary-Secondary: 3.0KVAC;≤10mA. Primary-PG: 1.5KVAC;≤10mA. Secondary-PG: 0.5KVDC;≤10mA			
Isolation Resistance		100M ohms			
EMI Conduction & Radiation		Compliance to EN55022 Class B			
Harmonic Current		Compliance to EN61000-3-2, Class A			
EMS Immunity		Compliance to EN61000-4-2, 3, 4, 5, 6, 8, 11; heavy industry level			
General Characteristics					
MTBF (MIL-HDBK-217F)		More than 200,000Hrs (25°C, Full load)			
Dimension (LxWxH)		129x98.3x37.6mm			
Packing		30PCS/CTN. G.W: 14.6kgs			
Cooling Method		Cooling by free air convection			
Note		1. All parameters NOT specially mentioned are measured at rated input, rated load, and 25°C of ambient temperature 2. Measured at 20MHz of bandwidth by using a 12" Twisted pair wire terminated with a 0.1uF & 47uF parallel capacitor 3. The SPS is considered a component which will be installed into final equipment. The equipment must be re-confirmed that it still meets EMC directives.			

MECHANICAL SPECIFICATIONS



Pin No.	Assignment
1	AC-L
2	AC-N
3	F.G
4	DC output -V
5	DC output +V

DERATING CURVE



UNIT: mm

Mouser Electronics

Authorized Distributor

Click to View Pricing, Inventory, Delivery & Lifecycle Information:

Qualtek:

[QGKF-100-48](#) [QGKF-100-12](#) [QGKF-100-24](#)